

# **KNIPSS, Sultanpur (U.P.)**

Affiliated to Dr. Ram Manohar Lohia Avadh University, Ayodhya (U.P.)



**NAAC 3<sup>rd</sup> Cycle**

**SSR**

## **2.6: Student Performance and Learning Outcomes**

**Metric No: 2.6.1 OBE Manual**

Chapter-2 Criterion: II Metric: 2.6.1

# OBE Manual



NAAC 3rd Cycle, SSR

**KNIPSS, Sultanpur (U.P.)**

Affiliated to Dr. Ram Manohar Lohia Avadh University,  
Ayodhya (U.P.)

## Table of Contents

<b>Preamble</b> .....	4
Vision of the Institute .....	4
Mission of the Institute.....	4
Core values of the Institute.....	5
<b>Scope of OBE</b> .....	5
<b>Objectives of OBE</b> .....	5
<b>OBE adapted</b> .....	6
<b>OBE Committee</b> .....	6
<b>Roles and responsibilities</b> .....	6
<b>Graduate attributes</b> .....	7
<b>POs and COs</b> .....	7
<b>OBE framework of the KNIPSS</b> .....	8
<b>Guidelines for mapping the attainment of OBE</b> .....	9
Questionnaire to evaluate the attainment of Program Outcomes (POs) and Course Outcomes (COs) .....	9
Mapping of scores .....	10
Analysis of attainment level.....	10
<b>Follow-up action plan</b> .....	10



## Preamble

Kamla Nehru Institute of Physical and Social Sciences Sultanpur, Accredited 'A' Grade an empirical Institute in eastern UP affiliated to Dr. RMLAU Ayodhya endeavors to proactively participate in the mission of Indian Higher Education System. The objective is to elevate the competency levels of the local students to meet the global demands. The meticulous and stringent educational methodology of Outcome Based Education (OBE) is followed to enrich the student learning through performance outcomes. This curriculum model aims to maximize student learning outcomes by developing their skills. The OBE model supports the students to attain intellectual knowledge, skills, and attitudes to ensure the holistic learning environment with clarity, flexibility, comparison, and efficient involvement.

The OBE framework provides the guidelines to enable teaching and learning process of the institution to attain international recognition and global employment opportunities. It leads to enable the students to excel in their profession and career accomplishments.

### Vision of the Institute

“The aim of establishing Kamla Nehru Institute is not only building a campus for imparting education rather, to establish an institution for fight against poverty with the double resolve to translate the intention of the inhabitants of the region who fought for the struggle of freedom with great zeal and enthusiasm in the revolution of the year 1857. Kamla Nehru Institute shall be the centre for fight of economic freedom with its avowed object for excellence and economic justice.”

### Mission of the Institute

- To impart quality education to students, without any caste, racial, social, economic and gender discrimination.
- Use of modern technology for both innovative and effective teaching.
- To conduct career-oriented courses, to prepare them for future opportunities.
- To cultural and environmental enrichment and create disciplined as well as socially responsible citizens.
- To prepare students to face the untimely challenges and, how to successfully overcome it.

## Core values of the Institute

Our founder established the Institute for the purpose of eradicating economic backwardness of the region through quality education. For the pursuit of the mission, institute has adopted certain practices which in due course of time have become our core values.

- **Hard work:** It is the key to unlock the door of success. Our institute attempt to motivate all the stakeholders for hard work.
- **Discipline:** Hard work is necessary but without discipline no institute can produce desired result. We as an organization attempt to create a disciplined academic environment.
- **Excellence:** Our aim is to produce excellent students who can take the society and country forward and make better future.
- **Professionalism:** Institute tries to inculcate professionalism among its students. This professionalism helps them to survive and advance towards bright future.

## Scope of OBE

- The guidelines of this OBE policy are applicable to all the students and faculty members covered under the umbrella of NEP 2020.
- The guidelines laid herein are applicable to all the academic programs, courses, curricular, co-curricular, extra-curricular, extension activities undertaken by the stakeholders.

## Objectives of OBE

The Objectives of the OBE policy are stated as follows:

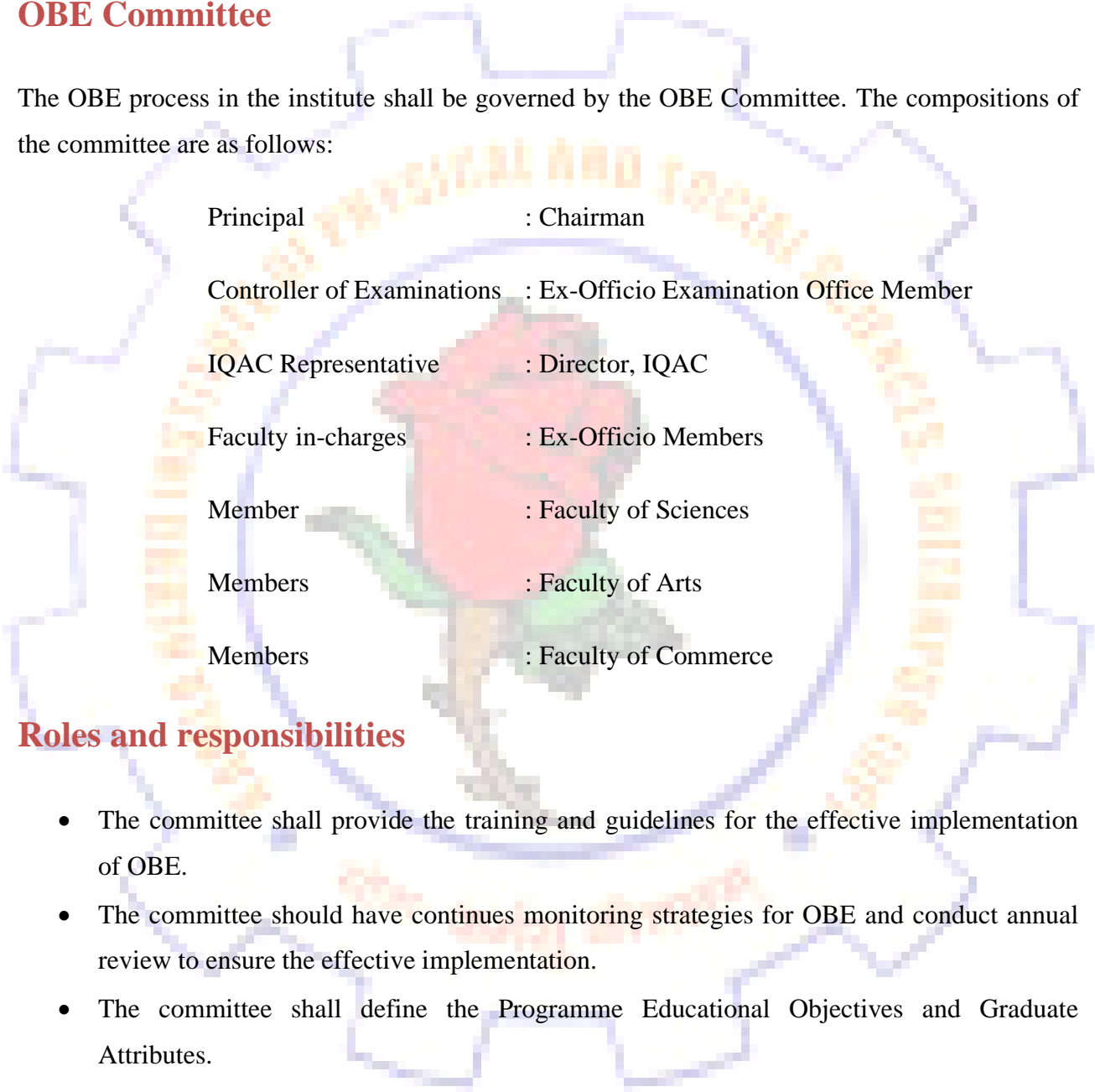
1. To create Learner Centric and Outcome-Based Teaching learning environment.
2. To ensure the publication of POs and COs on the website, on the notice boards and in the students' WhatsApp groups.
3. To empower the stakeholders to be effective in OBE implementation.
4. To state the outcome-based assessment to measure the attainment of POs and COs at the end of courses and or programs.

## OBE adapted

KNIPSS adapted the OBE since the adaptation of NEP-2020 from academic session 2021-22. It covers all the programs running in the Faculty of Arts, Science and Commerce.

## OBE Committee

The OBE process in the institute shall be governed by the OBE Committee. The compositions of the committee are as follows:



Principal	: Chairman
Controller of Examinations	: Ex-Officio Examination Office Member
IQAC Representative	: Director, IQAC
Faculty in-charges	: Ex-Officio Members
Member	: Faculty of Sciences
Members	: Faculty of Arts
Members	: Faculty of Commerce

## Roles and responsibilities

- The committee shall provide the training and guidelines for the effective implementation of OBE.
- The committee should have continues monitoring strategies for OBE and conduct annual review to ensure the effective implementation.
- The committee shall define the Programme Educational Objectives and Graduate Attributes.
- The committee will guide the departments to ensure that students become aware of Programme Outcomes and Course Outcomes.
- The committee shall review the outcome attainments at the end of semesters.
- The committee shall ensure the quality assurance of the curriculum, pedagogical teaching methods of the institutions to attain the outcomes.

- The committee will endorse the “Teacher training cell” to organize re-skilling programs for teacher from time to time.

## Graduate attributes

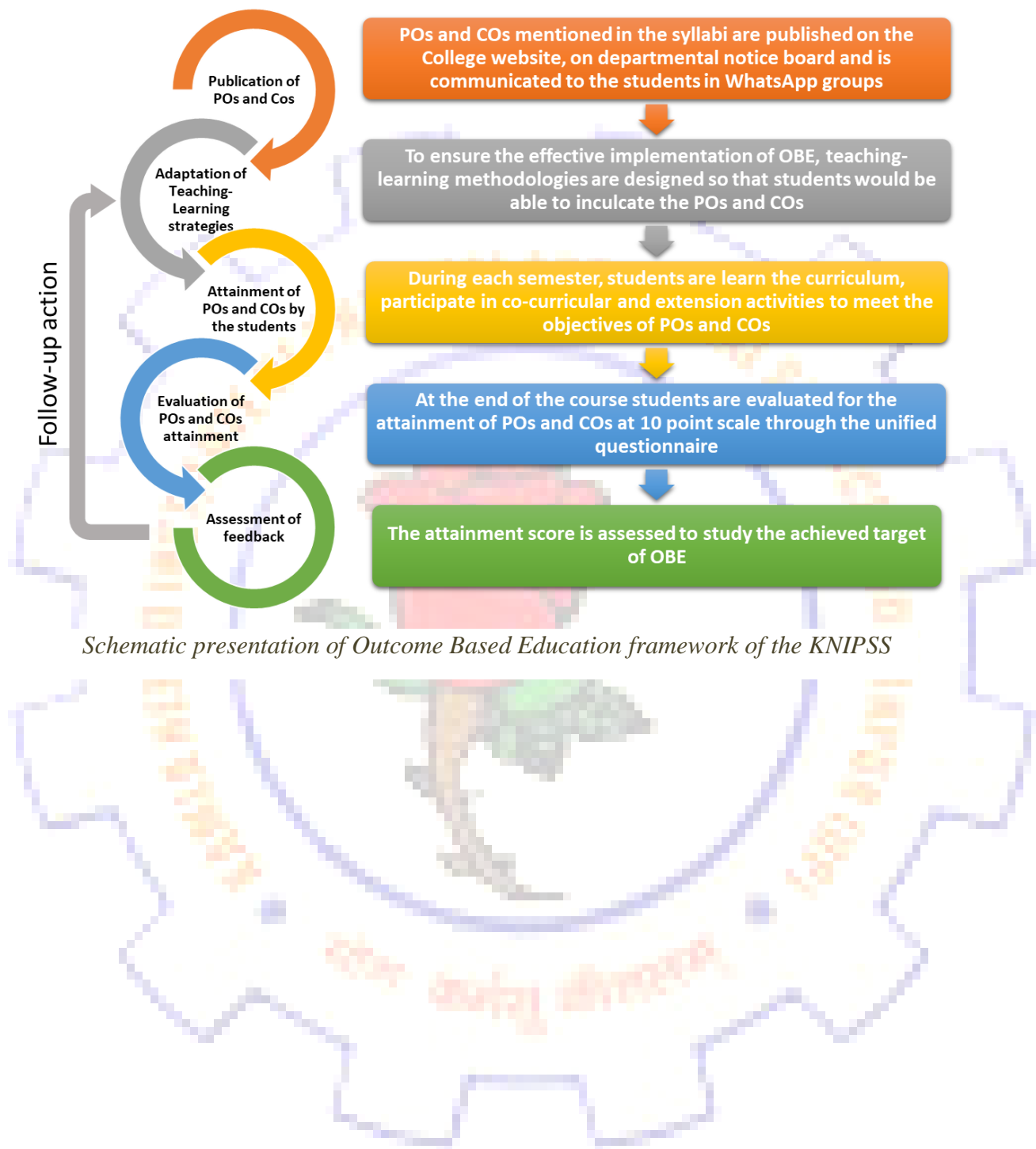
Students shall inculcate the following attributes:

1. Subject Knowledge
2. Problem Analysis
3. Design and Development of the Solution
4. Usage of Technology
5. Application of Knowledge in Society
6. Environment and Sustainability
7. Ethics and Values
8. Individual and Teamwork
9. Effective Communication
10. Lifelong Learning Ability
11. Culture, Patriotism, and International Outlook
12. Positive Attitude and Open Mindedness

## POs and COs

The syllabi of NEP-2020 are designed by the Directorate of Higher Education, Government of Uttar Pradesh and adapted by the affiliating university. All the syllabi contain POs of the program and COs of the courses as well as semesters. These POs and COs are published elsewhere on the website in consolidated form.

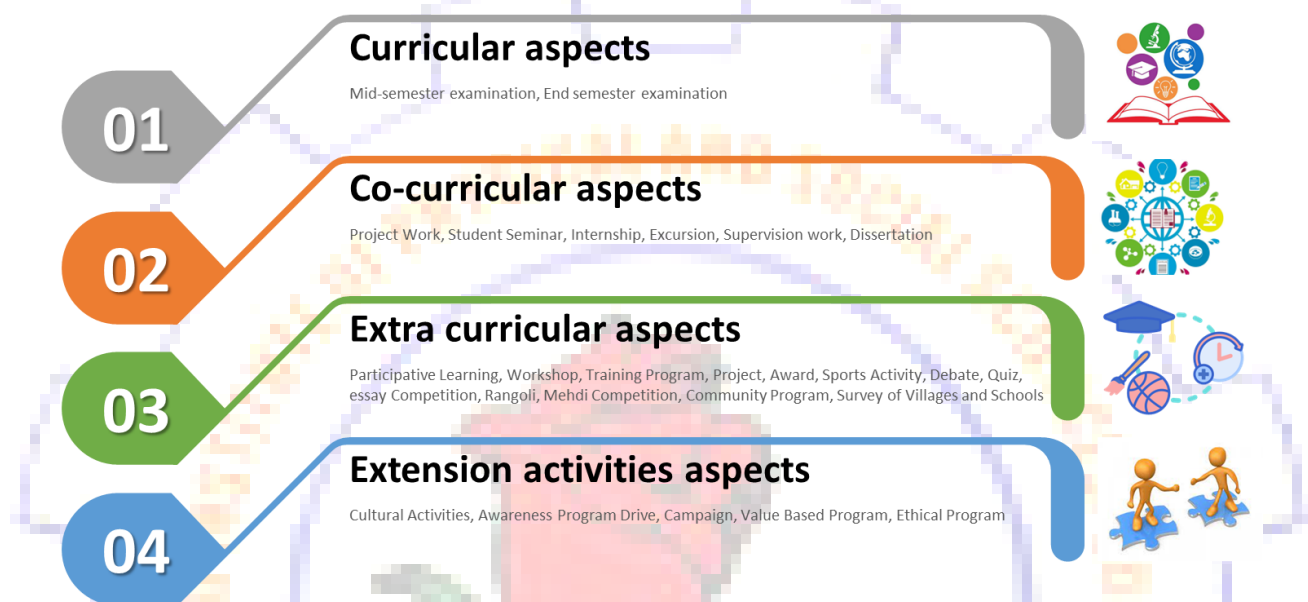
## OBE framework of the KNIPSS





## Guidelines for mapping the attainment of OBE

The attainment of POs and COs by the students is assessed by measuring the score on 10-point score. This score is generated from the responses of questionnaire attempted by the students at the end of semester. These questionnaire covers following parameters:



### Questionnaire to evaluate the attainment of Program Outcomes (POs) and Course Outcomes (COs)

Sr. No.	Question	Response	
		Yes	No
1	Have you participated in the induction program?	1	0
2	Are you aware about POs of the program you have opted?	1	0
3	Are you aware about COs of the course you have completed?	1	0
4	Are you in the direct contact of your teachers/mentors to achieve the POs and COs?	1	0
5	Have you passed the mid-semester examination?	1	0
6	Have you earned all the credits allotted for theory marks?	1	0
7	Have you earned all the credits allotted for practical marks?	1	0
8	Have you participated in co-curricular activities during last semester?	1	0
9	Have you participated in extra-curricular activities during last semester?	1	0
10	Have you participated in extension activities during last semester?	1	0
Maximum score		10	0

$$\text{Score obtained (\%)} = \frac{\text{Total score obtained}}{\text{Maximum score}} \times 100$$

## Mapping of scores

Scores obtained by the students is categorized at four attainment level.

Score obtained	Attainment level
0 to 25 %	Not specified
25 to 50 %	Not attained
50 to 75 %	Partially attained
75 to 100 %	Fully attained

## Analysis of attainment level

The OBE committee shall analyze the map of attainment level and design the action plan to improve the method of teaching-learning.

## Follow-up action plan

After analyses of the attainment level OBE committee will endorse the “Teacher training cell” to organize re-skilling programs for teachers for effective implementation of OBE in coming academic session.

## Review of OBE system

The OBE committee of the Institute shall review the implemented system based on stakeholders’ feedback and analysis. Due attention shall be given to incorporate the needs of the students and developmental concerns of nation. The OBE policy shall be updated to incorporate changes in the government policies, new initiatives in higher education and demanding innovations by the Institution.

- approved by